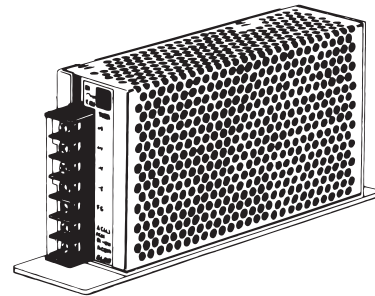


# PAA Series Attachment

BASE Attachment

Plate model	Applicable to model
F-K50-1	PAA50
F-PAA75-1	PAA75
F-P100-1	PAA100
F-P150-1	PAA150

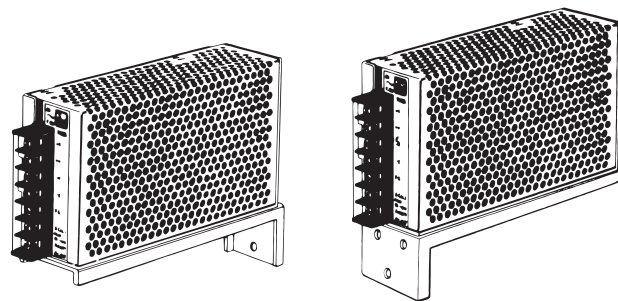
Example



&lt; TOP VIEW &gt; (Unit : mm) (Tolerance : ±1)

F-K50-1		F-PAA75-1	
<p>Size</p> <p>★ Material : SPCC ★ Thickness : 2.0</p>		<p>Size</p> <p>★ Material : SPCC ★ Thickness : 2.0</p>	
★ M3 × 6ℓ Flat screw is requested when mounting.			
<p>Mounting hole size</p> <p>FRONT ←</p> <p>160</p>		<p>Mounting hole size</p> <p>FRONT ←</p> <p>185</p>	
F-P100-1		F-P150-1	
<p>Size</p> <p>★ Material : SPCC ★ Thickness : 2.0</p>		<p>Size</p> <p>★ Material : SPCC ★ Thickness : 2.0</p>	
★ M4 × 8ℓ Flat screw is requested when mounting.			
<p>Mounting hole size</p> <p>FRONT ←</p> <p>199.5</p>		<p>Mounting hole size</p> <p>FRONT ←</p> <p>209</p>	

Example



FRONT · REVERSE  
Attachment

Plate model	Applicable to model
F-K50-2	PAA50
F-PAA75-2	PAA75
F-P100-2	PAA100
F-P150-2	PAA150

< TOP VIEW > (Unit : mm) (Tolerance : ±1)

<p style="text-align: center;"><b>F-K50-2</b></p> <p>Size</p> <p style="text-align: right;">* Material : SPCC * Thickness : 1.6</p>	<p style="text-align: center;"><b>F-PAA75-2</b></p> <p>Size</p> <p style="text-align: right;">* Material : SPCC * Thickness : 2.0</p>
<p style="text-align: center;"><b>F-P100-2</b></p> <p>Size</p> <p style="text-align: right;">* Material : SPCC * Thickness : 2.0</p>	<p style="text-align: center;"><b>F-P150-2</b></p> <p>Size</p> <p style="text-align: right;">* Material : SPCC * Thickness : 2.0</p>

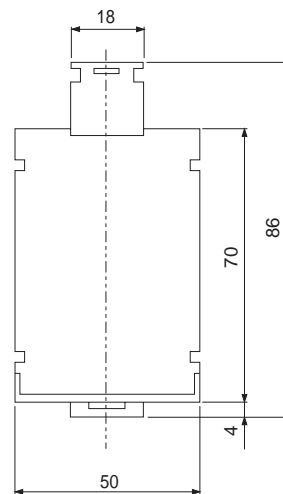
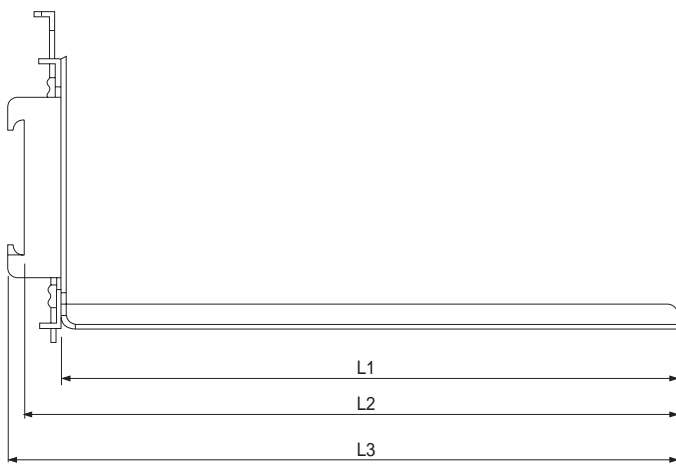
# Din rail Attachment Plate

## APPLICABLE TO MODEL

Din rail width : 35mm

Plate model	Model	screws for installation	
		Type	Qty
FD-A	P30, R50A RMB30A, RMC30A	M3	2pcs
	P50, PAA50	M3	3pcs
FD-B	P15, MMC8A R10A, R15A, R25A RMB15A, RMC15A	M3	2pcs

## EXTERNAL VIEW



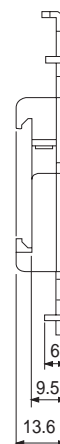
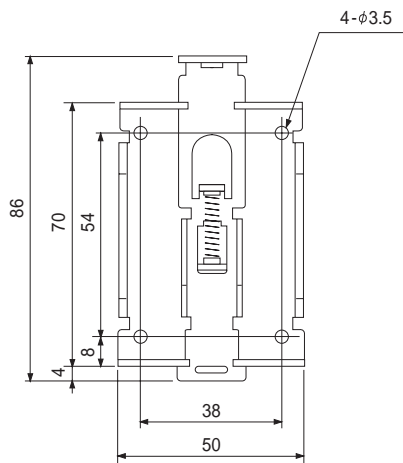
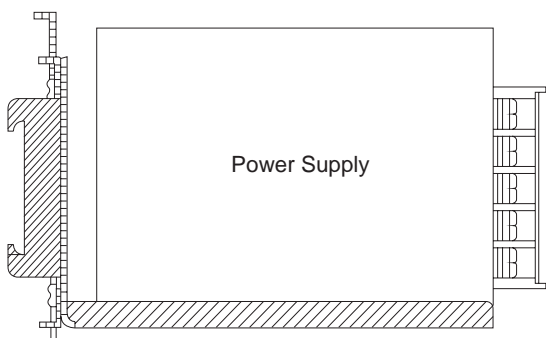
(Unit : mm)

Model	L1	L2	L3
FD-A	165	174.5	178.6
FD-B	115	124.5	128.6

- ★ Material : SPCC
- ★ Thickness : 1.6
- ★ Tolerance :  $\pm 1$

## DIN RAIL ATTACHMENT MODEL : FD-SP

## MOUNTING EXAMPLE



- ★ Material : SPCC
- ★ Thickness : 1.6
- ★ Tolerance :  $\pm 1$

Harness for input/output(J type) is prepared in PAA series.

## PAA Series

### Mating harness

Model	Harness model #	
	Input	Output
PAA50F	H-IN-1 or H-IN-8	H-OU-20
PAA75F		H-OU-21

●Model number

H-IN-1

Housing : 10-63-3044 (Molex)  
Pin : 08-70-1030 or  
08-70-1031  
(Molex)

●Type

●Wire

Pin #	Wire	AWG	Color	Length ℓ (mm)
1	UL1015	20	green	500
2	UL1015	20	black	500
3				
4	UL1015	20	white	500

●Model number

H-IN-8

Housing : 10-63-3044 (Molex)  
Pin : 08-70-1030 or  
08-70-1031  
(Molex)

●Type

●Wire

Pin #	Wire	AWG	Color	Length ℓ (mm)
1	UL1015	20	green/yellow	500
2	UL1015	20	black	500
3				
4	UL1015	20	white	500

●Model number

H-OU-20

Housing : 09-50-1043 (Molex)  
Pin : 08-70-1030 or  
08-70-1031  
(Molex)

●Type

●Wire

Pin #	Wire	AWG	Color	Length ℓ (mm)
1	UL1015	18	red	500
2	UL1015	18	red	500
3	UL1015	18	black	500
4	UL1015	18	black	500

●Model number

H-OU-21

Housing : 09-50-1063 (Molex)  
Pin : 08-70-1030 or  
08-70-1031  
(Molex)

●Type

●Wire

Pin #	Wire	AWG	Color	Length ℓ (mm)
1	UL1015	18	red	500
2	UL1015	18	red	500
3	UL1015	18	red	500
4	UL1015	18	black	500
5	UL1015	18	black	500
6	UL1015	18	black	500

Harness for remote ON/OFF(R type) is prepared in LDA, UAW, PAA, LEA, LEB & LEP series.

LDA Series  
UAW Series  
PAA Series  
LEA Series  
LEB Series  
LEP Series

Mating harness

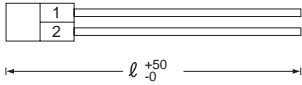
Model	Harness model #
LDA50F, LDA75F, LDA100W, LDA150W, LDA300W	H-RC-1
UAW250S	
PAA50F, PAA75F, PAA100F, PAA150F	
LEA50F, LEA75F, LEA100F, LEA150F, LEP100F, LEP150F, LEP240F	
LEB100F, LEB150F, LEB225F	

●Model number

**H-RC-1**

Housing : XHP-2 (J.S.T.)  
Pin : SXH-001T-P0.6 (J.S.T.)

●Type



●Wire

Pin #	Wire	AWG	Color	Length ℓ (mm)
1	UL1007	22	orange	500
2	UL1007	22	blue	500

## Terminal Attachment

Terminal attachment to facilitate two or more terminal connections to power supply output is prepared in PAA, UAW, UAF, MAX and ACE series.

Type	Mating Model	Contents
B-PAA600-1	PAA300 PAA600 UAW500 UAF500	Terminal attachment to facilitate two or more terminal connections to power supply output
B-MX-1	PBA600F MAX1600F MAX1600T MAX3200T	Terminal attachment to facilitate terminal connections to power supply output
B-MX-9	MAX1600F MAX1600T MAX3200T	Terminal attachment for series operation as output modules

B-PAA600-1	B-MX-1
<p>Size</p> <p>           * Material : Copper            * Thickness : 2.0            * Dimension in mm         </p>	<p>Size</p> <p>           * Material : Copper            * Thickness : 2.0            * Dimension in mm         </p>

\* It is necessary to install the attachments on opposite direction to avoid short-circuit between + and - in terminal block.

B-MX-9	
<p>Size</p> <p>           * Material : Copper            * Thickness : 1.5            * Dimension in mm         </p>	

\* It is necessary to install B-MX-1 on opposite direction to avoid short-circuit between + and - terminal block.

\* Please note the direction of the installation to prevent the short-circuit between the outputs when using B-MX-1 and B-MX-9 at the same time.

\* The cover of terminal block does not be attached to B-MX-1 with installation screw and solderless terminal occasionally.